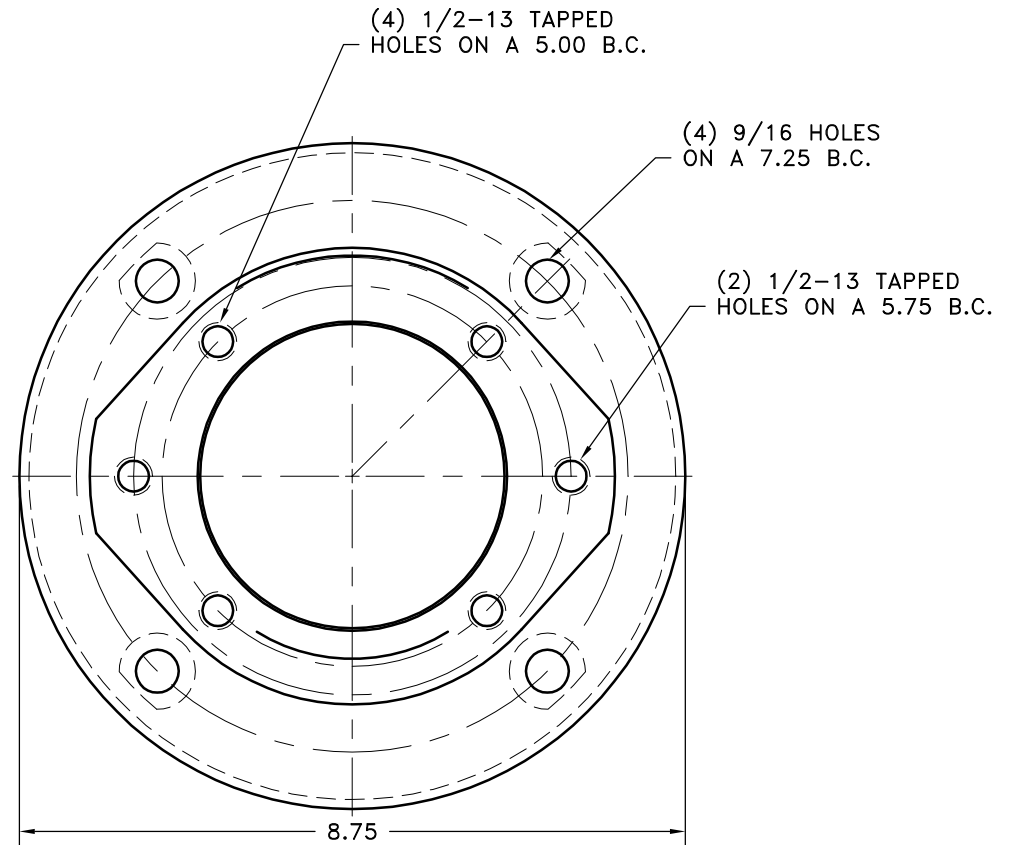
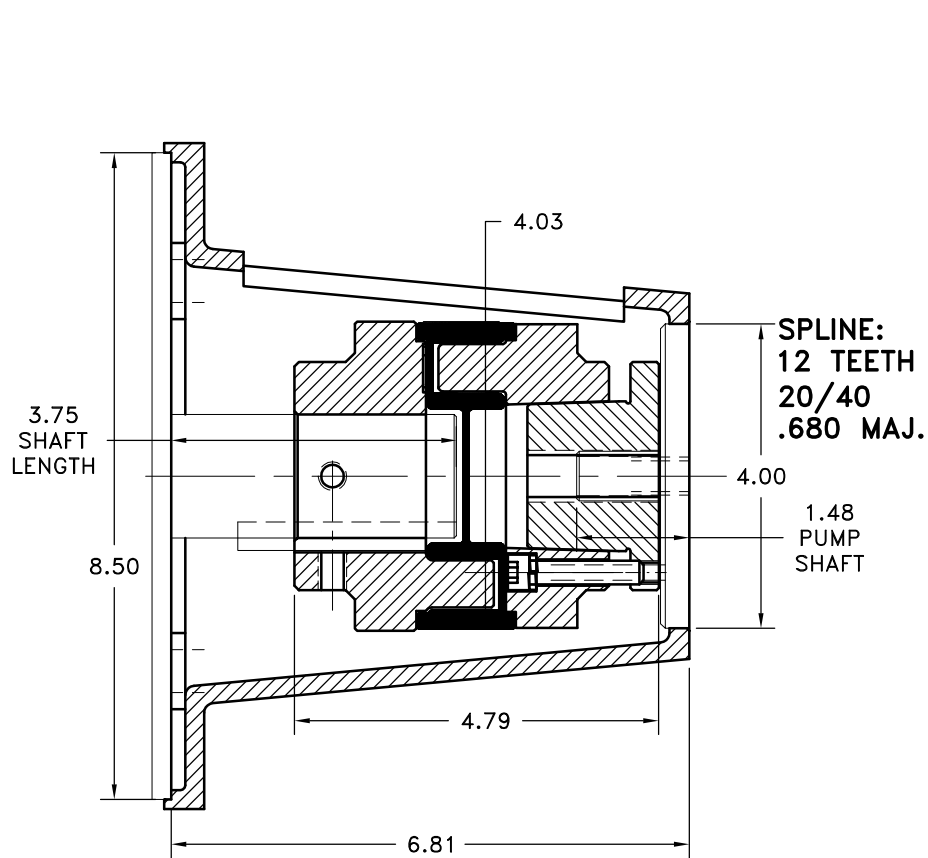


REV	DATE	CHANGE DESCRIPTION	MOD.BY	CK1	CK2



**1 5/8" SHAFT
3/8" KEY**

4SO-138TC-00

8	AC-16	ACCESS COVER	1
7	E61-B24	ELECTRIC MOTOR HOUSING	1
6	4OH-00-00	HYTREL INSERT	1
5	PURCHASE	5/16 HI-COLLAR LOCKWASHER	4
4	PURCHASE	5/16-18x1-1/2 SHCS	4
3	C10	TAPERLOCK BUSHING	1
2	40STC-C	40 SERIES TAPERLOCK HALF	1
1	4AO-21-00	40 SERIES COUPLING HALF	1

THIS DRAWING IS THE PROPERTY OF HAYES MFG. INC. AND IS LOANED
SUBJECT TO THE CONDITION THAT IT SHALL NOT BE REPRODUCED,
COPIED, LOANED OR OTHERWISE DISPOSED OF, DIRECTLY OR INDIRECTLY.
IT SHALL BE USED AS A MEANS OF REFERENCE TO WORK FURNISHED BY
THIS COMPANY ONLY AND IS NOT TO BE SUBMITTED TO OUTSIDE PARTIES
FOR EXAMINATION WITHOUT OUR CONSENT.

SYMBOLS	DET.	PART NUMBER	DESCRIPTION	QTY.
/ FLATNESS / STRAIGHTNESS / ANGULARITY / SQUARENESS / PARALLELISM / CONCENTRICITY / TRUE POSITION / ROUNDNESS / CIRCULAR RUN OUT / TOTAL RUN OUT / CYLINDRICITY / FINISH	DO NOT SCALE DRAWING TOLERANCES UNLESS OTHERWISE SPECIFIED 12/5 MAXIMUM ANGLE ±1/2° FRACTION ±1/32 DECIMAL .00 ±.01 .000 ±.005 .0000 ±.0005	REMOVE FIRST THREAD ON ALL TAPPED HOLES BREAK ALL SHARP CORNERS .010 TO .020 STAMP OR MARK DRAWING NO.	HAYES MANUFACTURING INC. ® TITLE ELECTRIC MOTOR HOUSING AND COUPLING ASS'Y MATERIAL	DRAWN BY SIETING CHECKED BY RJH DATE 01-29-2009 SCALE DRAWING NO. E61-B24-040-01 SHEET OF REV.