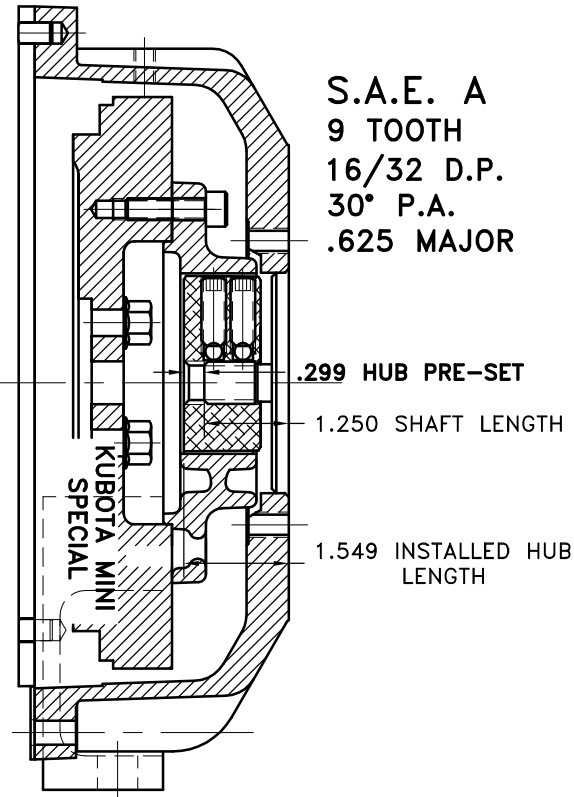
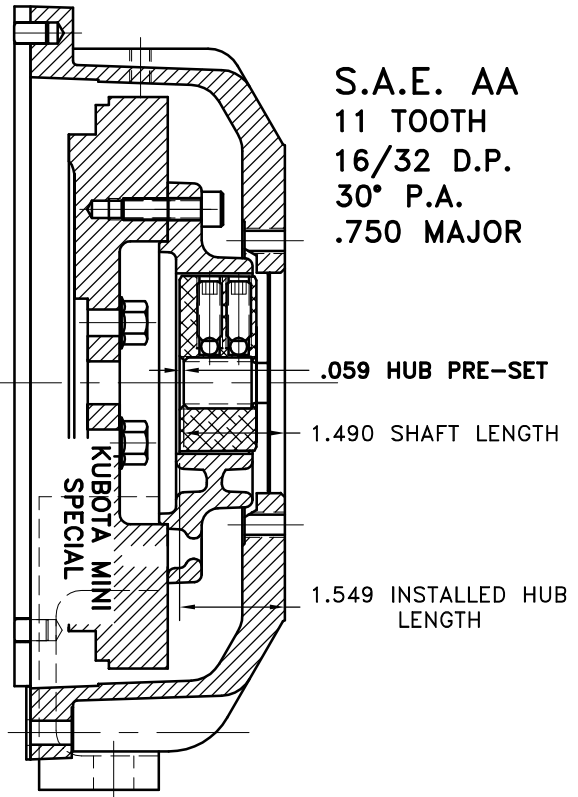


# KUBOTA MINI 972



S.A.E. A  
9 TOOTH  
16/32 D.P.  
30° P.A.  
.625 MAJOR

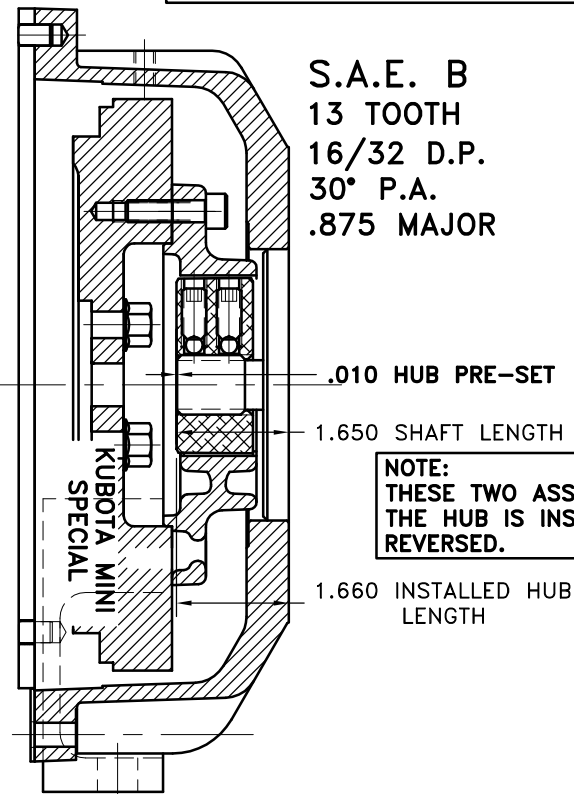
.299 HUB PRE-SET  
1.250 SHAFT LENGTH  
1.549 INSTALLED HUB LENGTH



S.A.E. AA  
11 TOOTH  
16/32 D.P.  
30° P.A.  
.750 MAJOR

.059 HUB PRE-SET  
1.490 SHAFT LENGTH  
1.549 INSTALLED HUB LENGTH

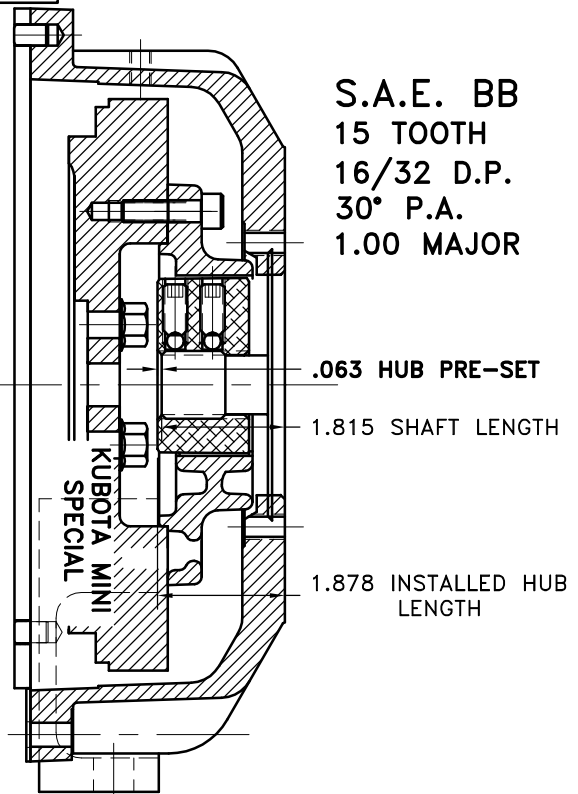
SET SCREW TORQUE: 20 FT.LBS.



S.A.E. B  
13 TOOTH  
16/32 D.P.  
30° P.A.  
.875 MAJOR

.010 HUB PRE-SET  
1.650 SHAFT LENGTH  
1.660 INSTALLED HUB LENGTH

NOTE:  
THESE TWO ASSEMBLIES  
THE HUB IS INSTALLED  
REVERSED.



S.A.E. BB  
15 TOOTH  
16/32 D.P.  
30° P.A.  
1.00 MAJOR

.063 HUB PRE-SET  
1.815 SHAFT LENGTH  
1.878 INSTALLED HUB LENGTH

### IMPORTANT INSTALLATION NOTE!!!!

THIS PRINT IS FOR LOCATION OF HUB ON SPLINED SHAFTS ONLY. IMPROPER INSTALLATION OF HUB COULD CAUSE PREMATURE WEAR AND OR FAILURE. IF YOU HAVE A SHAFT LENGTH OTHER THAN THOSE SHOWN HERE PLEASE CONTACT DISTRIBUTOR OR FACTORY FOR FURTHER INFORMATION. HUB SET SCREWS MUST BE PROPERLY TORQUED TO 20 FT.LBS. EACH. PLEASE CONTACT DISTRIBUTOR OR FACTORY FOR ANY FURTHER QUESTIONS.

THIS DRAWING IS THE PROPERTY OF HAYES MFG. INC. AND IS LOANED SUBJECT TO THE CONDITION THAT IT SHALL NOT BE REPRODUCED, COPIED, LOANED OR OTHERWISE DISPOSED OF, DIRECTLY OR INDIRECTLY, IT SHALL BE USED AS A MEANS OF REFERENCE TO WORK FURNISHED BY THIS COMPANY ONLY AND IS NOT TO BE SUBMITTED TO OUTSIDE PARTIES FOR EXAMINATION WITHOUT OUR CONSENT.

SYMBOLS	DET.	PART NUMBER	DESCRIPTION	QTY.
<ul style="list-style-type: none"> <li>— FLATNESS</li> <li>— STRAIGHTNESS</li> <li>— ANGULARITY</li> <li>— SQUARENESS</li> <li>— PARALLELISM</li> <li>— CONCENTRICITY</li> <li>— TRUE POSITION</li> <li>— ROUNDNESS</li> <li>— CIRCULAR RUN OUT</li> <li>— TOTAL RUN OUT</li> <li>— CYLINDRICITY</li> <li>— FINISH</li> </ul>	DO NOT SCALE DRAWING TOLERANCES UNLESS OTHERWISE SPECIFIED 1/32" MAXIMUM ANGLE ±1/2° FRACTION ±1/32 DECIMAL .00 ±.01 .000 ±.005 .0000 ±.0005			
TITLE <b>KUBOTA MINI HUB PRE-SET PRINT</b>		DRAWN BY SIETING		DATE 11-09-05
MATERIAL		CHECKED BY RJH		DRAWING NO. <b>HPS-2</b> SHEET OF REV.
— UNLESS OTHERWISE SPECIFIED — REMOVE FIRST THREAD ON ALL TAPPED HOLES BREAK ALL SHARP CORNERS .010 TO .020 STAMP OR MARK DRAWING NO.				