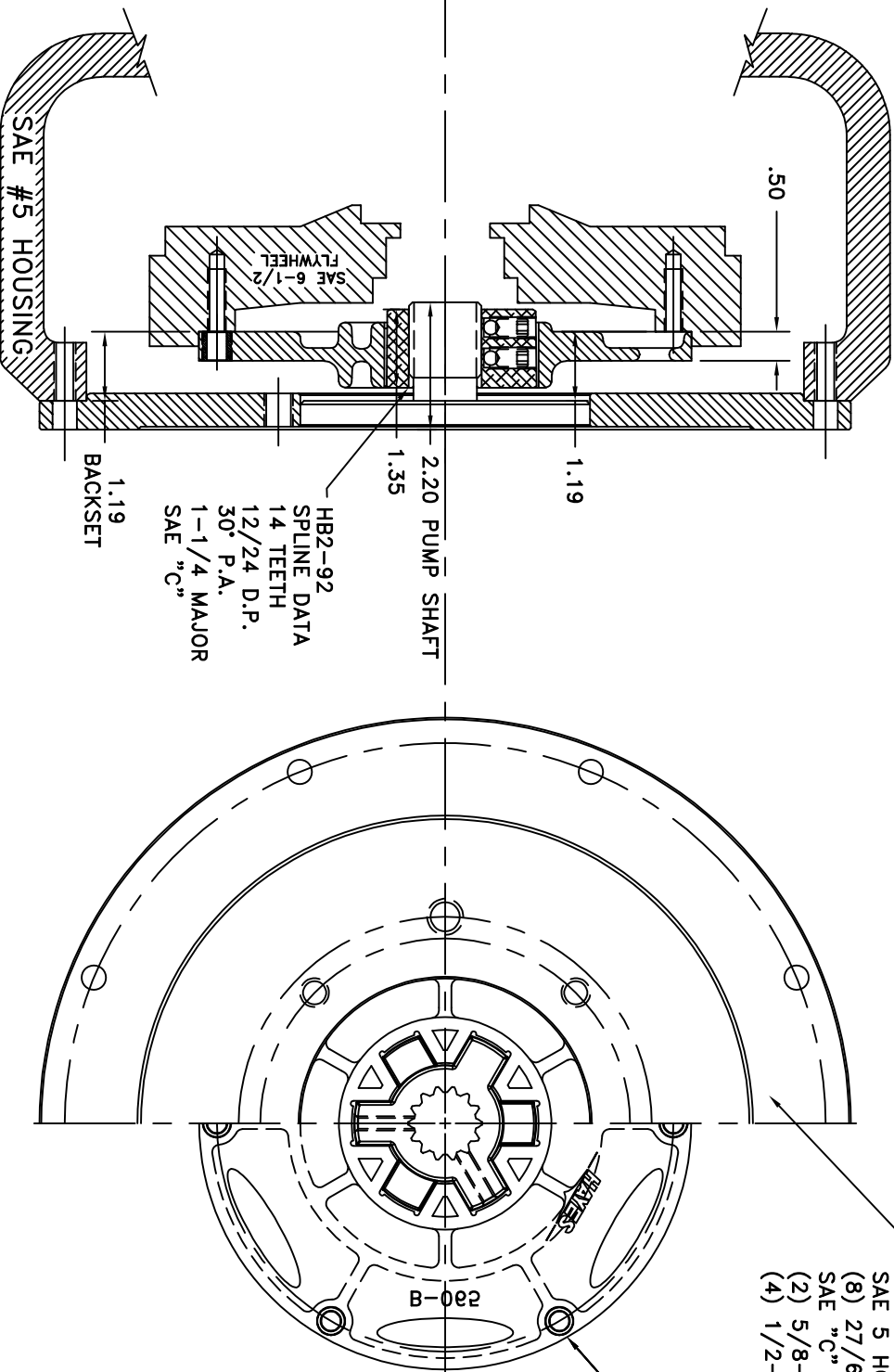


REV	DATE	CHANGE DESCRIPTION	MOD BY	CHK1	CHK2

- P/N 123845-16
SAE 5 HOUSING MOUNT, 12 3/8 PILOT
(8) 27/64 HOLES ON A 13 1/8 B.C.
SAE "C" PUMP MOUNT, 5 PILOT
(2) 5/8-11 TAPPED HOLES ON A 7 1/8 B.C.
(4) 1/2-13 TAPPED HOLES ON A 6 3/8 B.C.



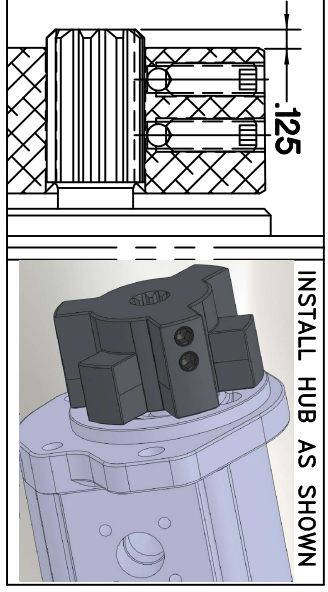
IMPORTANT INSTALLATION NOTE!!!!
IMPROPER INSTALLATION OF HUB COULD CAUSE
PREMATURE WEAR AND OR FAILURE.

IF YOU HAVE QUESTIONS CONCERNING LOCATION
OF METAL HUB ON PUMP SHAFT PLEASE CONTACT
DISTRIBUTOR OR FACTORY FOR FURTHER
INFORMATION

**BOTH HUB SET SCREWS MUST BE PROPERLY
TORQUED TO 25 FT.LBS. USING TORQUE WRENCH.**
PLEASE CONTACT DISTRIBUTOR OR FACTORY FOR
ANY FURTHER QUESTIONS.

**B TORQUE RANGE
(30-75 HP)**

- NOTE: THIS STEP IS IMPORTANT TO
ENSURE FULL SPLINE ENGAGEMENT.**
- 1) PRESET HUB ON SHAFT AS SHOWN.
 - 2) IF YOUR PUMP SHAFT VARIES FROM THE DRAWN
SHAFT LENGTH, CONTACT FACTORY FOR
RECOMMENDATIONS.
 - 3) **TORQUE BOTH SET SCREWS TO 25 FT.LBS. USING
TORQUE WRENCH.**
 - 4) SHAFT SHOULD HAVE FULL SPLINE ENGAGEMENT INTO
HUB, IF NOT CONTACT FACTORY FOR
RECOMMENDATIONS (231) 879-3372.



SYMBOLS		DO NOT SCALE		TITLE	
FLATNESS	PERPENDICULARITY	TO DIMENSIONS UNLESS OTHERWISE SPECIFIED	16/ MANUAL	HEX~FLX COUPLING ASSY	
ANGULARITY	PERPENDICULARITY	TO DIMENSIONS UNLESS OTHERWISE SPECIFIED	16/ MANUAL	HEX~FLX COUPLING ASSY	
CONCENTRICITY	TRUE POSITION	TO DIMENSIONS UNLESS OTHERWISE SPECIFIED	16/ MANUAL	HEX~FLX COUPLING ASSY	
ROUNDNESS	CIRCULAR RUN OUT	TO DIMENSIONS UNLESS OTHERWISE SPECIFIED	16/ MANUAL	HEX~FLX COUPLING ASSY	
TOTAL RUN OUT	CYLINDRICITY	TO DIMENSIONS UNLESS OTHERWISE SPECIFIED	16/ MANUAL	HEX~FLX COUPLING ASSY	
FINISH	FINISH	TO DIMENSIONS UNLESS OTHERWISE SPECIFIED	16/ MANUAL	HEX~FLX COUPLING ASSY	
CLASS	MAKE	BUY	DATE	DRAWING NO.	
SAE 6.5	SAE 6.5	SAE 6.5	5/13/2020	B-065-HB2-92-GX24	
DESCRIPTION	DESIGN LEAD	SCALE	SHEET	REV.	
6-1/2, 5.1412/24, G24					